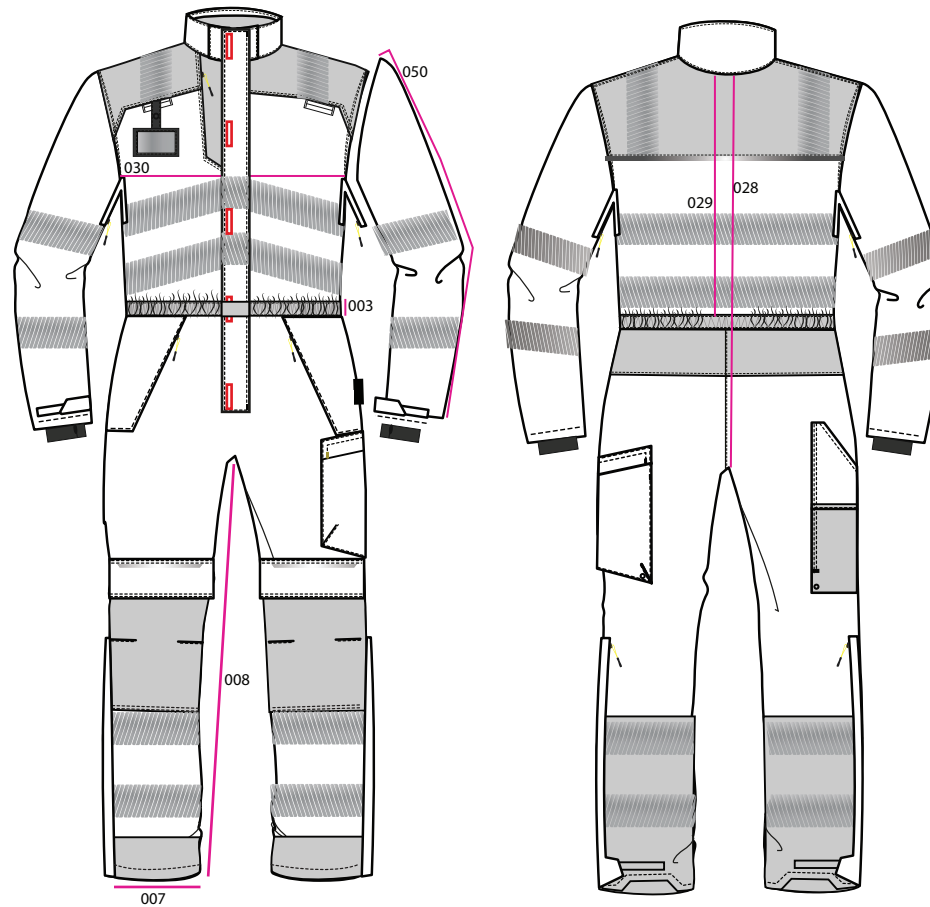


# PORTWEST® SIZE CHART

STYLE NO: **PW352** DESCRIPTION: **PW3 Insulated Coverall**



Measure No.	Coverall - Measurement Description	Position, additional detail	82-88cm	92-96cm	100-104cm	108-112cm	116-124cm	128-132cm	136-140cm	Tolerance '+/-'
			32-34"	36-38"	40-41"	42-44"	46-48"	50-52"	54-55"	
			<b>XS</b>	<b>S</b>	<b>M</b>	<b>L</b>	<b>XL</b>	<b>XXL</b>	<b>3XL</b>	
030	<b>Chest</b>	Taken 2.5cm below armhole	106.00	114.00	122.00	<b>130.00</b>	138.00	146.00	154.00	<b>1.00</b>
028	<b>Back neck (nape) to crotch</b>	From neck seam to true crotch	92.00	94.00	96.00	<b>98.00</b>	100.00	102.00	104.00	<b>1.00</b>
029	<b>Back neck to waist</b>	Excluding waistband			<b>55.00</b>					
007	<b>Leg/hem opening</b>		48.00	49.00	50.00	<b>51.00</b>	52.00	53.00	54.00	<b>1.00</b>
008	<b>Inner leg</b>		79.00	79.00	79.00	<b>79.00</b>	79.00	79.00	79.00	<b>1.00</b>

